



WATERBURY-
OXFORD

RUNWAY RECONSTRUCTION PROJECT



Airport Overview

Waterbury-Oxford Airport (the Airport) is owned and operated by the Connecticut Airport Authority (CAA). The Airport is located in the Towns of Oxford and Middlebury, Connecticut. The Airport is classified as a General Aviation (GA) Airport by the

Federal Aviation Administration (FAA). The Airport consists of one (1) main runway, Runway 18-36, which is 5,800 feet in length and 100 feet wide. In the Fall of 2017, the CAA commenced a project to reconstruct the runway. This project is described in detail below.

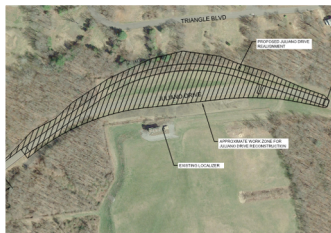
Project Description

Runway 18-36 was last reconstructed in 1992, and the existing pavement, lighting, signage and electrical conductors have reached their useful life. The project includes the total reconstruction of the existing pavement, new taxiway edge lights, new guidance and directional signs, new electrical conductors, new FAA navigational aids, the lowering of an Eversource transmission tower, and new airfield pavement markings. In addition, the Runway 36 elevation will be raised approximately 0.8 feet, and Runway 18 elevation will be raised approximately 5.5 feet to correct line of sight deficiencies, as well as address other FAA requirements. To complete this project, the Airport will be closed to arriving and departing aircraft for construction activities starting on July 5, 2018 for approximately a 30-day period. During this period, construction will be ongoing 24 hours a day / 7 days a week in order to complete the project. Residents living within the area can expect to see increased construction vehicle traffic and there is the potential for increased noise in the area.

Project Background

This project will correct two nonstandard conditions identified by FAA, the Runway 18-36 line of sight and the Runway 18 longitudinal gradient (no angle point within the first $\frac{1}{4}$ length of the Runway). All reconstructed pavements will be designed to current FAA geometry standards. Additional project elements include the relocation of a section of Juliano Drive to allow for the construction of the Runway 36 Safety area, as well as the relocation of the Runway 36 localizer and lowering of an Eversource transmission tower.

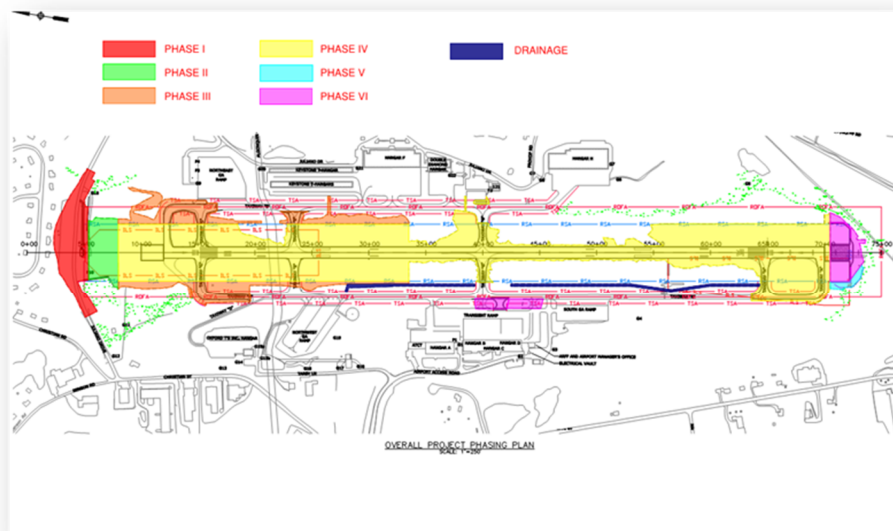
Project Schedule



Phase 1, Realignment of Juliano Drive

To date, the CAA has completed Phase 1, and Phases 2 and 5 are ongoing. Phase 1 of the project included the relocation of Juliano Drive, which allowed for a safety area to be constructed at the end of the Runway.

Phase 4 includes the complete reconstruction and the 24-hour closure of the runway and is expected to begin July 5, 2018. During this phase of the project, the airport will be closed to air traffic for the reconstruction of the runway.



For additional information on this project please visit our website:

<http://www.ctairports.org/airports/waterbury-oxford/planning-engineering/> or contact Mr. Robert Bruno via e-mail at rbruno@ctairports.org