


RECYCLING
The Natural Thing to Do!
**ITEMS FOR CURBSIDE
PICK-UP**
OXFORD

In Oxford, you may either contact a local hauler to arrange curbside collection for the recyclables shown on this chart, or you may bring them to the drop-off center.

Each item should be prepared as indicated and either placed in your curbside bin, if you choose curbside service, or delivered to the drop-off center.

RECYCLING
The Natural Thing to Do!
**ITEMS FOR
DROP-OFF**

This chart shows the items that must be kept separated from your regular trash. Each item should be prepared as indicated on the chart and brought to your drop-off center.

The Oxford drop-off center will also accept recyclables shown on this chart if you choose to deliver them, or you may contact your local hauler to arrange for curbside collection of those items.

The Oxford Recycling Center is located at 21 Great Oak Road, Oxford, CT and is open Saturday from 7:15 a.m. to 2:45 p.m. Any questions should be referred to the Recycling Coordinator at 888-7716. Additional hours on Wednesdays:

- Daylight Savings time (spring/summer) 10:00am to 5:45pm.
- End of daylight savings time (fall/winter) 8:00am to 3:45pm

OXFORD RECYCLES
PLASTIC
Includes:

△ PET/PETE: Soda & mineral water bottles, ketchup bottles, peanut butter jars

△ HDPE: Milk & water jugs, detergent, bleach & shampoo bottles

Not Included: Styrofoam, Food Wrap, Toys, Trays, Recycling Symbols

△ through △

Preparation:

Check for number code. Remove and discard caps. Bottle form only. Rinse clean. Labels & neck rings okay. Don't crush.

TIRES
Includes:

Tires with rims,

Passenger vehicle tires only-- 4qty

SCRAP METAL
Includes:

Light scrap metal, white goods, aluminum, copper, brass, tools, water tanks, pipes, aluminum siding, copper wire, faucets and propane tanks without valve.

Not Included: Oil-based paint cans, fuel oil, propane & gasoline tanks

Preparation:

Check with your local drop-off center. All wood and plastic must be stripped from metal. Capacitor must be removed from all white goods & freon products.

CARDBOARD
Includes:

Double-walled cardboard shipping cartons

Not Included:

Waxed cardboard, shoe boxes, pizza boxes, gift boxes, cereal boxes

Preparation:

Flatten, stack and tie in large quantities.

NEWSPAPER
Includes:

Newspapers, any inserts delivered with newspapers & magazines.

Not Included:

Junk mail, shiny paper, books

Preparation:

Tie stacks of newspaper with string or bundle in brown paper grocery bags.

METAL CANS
Includes:

Tin and aluminum cans and food wraps. Such as: soup and vegetable cans, pie plates and aluminum foil

Not Included:

Scrap metal, toasters, pots, pans, hangers, aerosols

Preparation:

Rinse clean and remove all labels.

GLASS
Includes:

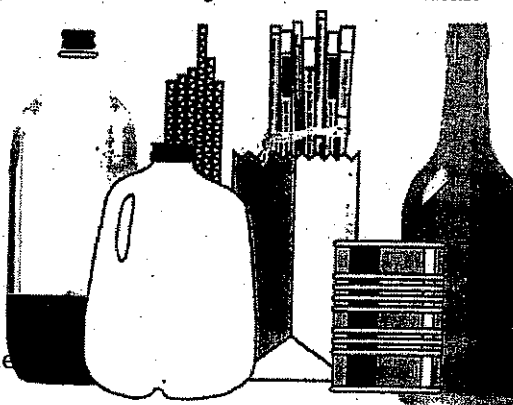
Clear, brown and green food and beverage containers, such as soda, juice and wine bottles, mayonnaise and jelly jars

Not Included:

Drinking glass, light bulbs, ceramics, window glass, mirror glass

Preparation:

Discard lids, neck rings and caps. Rinse clean.


BULKY WASTE
Includes:

Scrap wood, old rugs, furniture, plastic. All metal must be stripped from bulky waste. Just about everything, except household garbage. Limited to one 1/4 ton pickup truck load per week.

WASTE OIL
Saturday & Wednesday
Includes:

Used crankcase oil

Not Included:

Gasoline, automatic transmission fluid, fuel oil, hydraulic oil, parts cleaner, solvents, anti-freeze.

Preparation:

Place in clean plastic or metal jug. Do not use empty bleach containers.

BATTERIES
Includes:

Car batteries, truck batteries, boat batteries, tractor batteries, motorcycle batteries.

Not Included:

Flashlight batteries, hearing aid batteries, watch batteries

Preparation:

Deliver to drop-off center or return to store where replacement battery was purchased.

CHEMICALS

As a member of the Council of Governments we now have a program for Chemicals. Please watch for the notices appearing in VOICES for the three-times-per-year collection.

JUNK MAIL
Includes:

Catalogs

Envelopes (with or without windows)

Undeliverable and/or Advertising Mail

Sweepstake Forms

School Paper

a) Math Paper

b) Composition Paper

c) Construction Paper (with

paint, crayon or marker)

d) Textbooks without Hard

Covers

e) Softcover work books

Magazines

Office Paper

a) Fax or Photocopy Paper

b) Computer Printouts

c) White Ledger

d) Envelopes

Non-Metallic Wrapping Paper

Real Estate Books

NCR Paper

Color inserts from newspapers

Preparation:

* All the Acceptable Material can be mixed together

** White page portion of the telephone books are acceptable.

Not Included:

Newsprint

Cardboard Boxes

Chipboard Boxes **

Telephone Books (Yellow Pages)

Brown Paper Bags

Plastic Bags

Carbon Paper

Blue Prints