

O&G Industries, Inc.
 112 Wall Street, Torrington CT
 Tel: (860) 489-9261

CONTRACT CHANGE ORDER

Project: Oxford Middle School
 To: **Town Of Oxford**

Robert Slie
 486 Oxford Road
 Oxford
 CT 06478

Change No.: **PCO 115**
 Change Name: Reconcile Fire Protection Bid Package Allowance
 Contract No.: 2011400
 Contract Name: Town Of Oxford
 Change Date: 11/12/20
 Change Amount: **(2,180.00)**
 Schedule Impact: **0.00** Days

Description:

This PCO is to reconcile the Fire Protection Bid Package Allowance.

CE 126
 Eligible
 Out of Scope

Contract Change Items			
Change Item No.	Change Event Item No.	Name	Amount (USD)
0001		Fire Suppression Trade	(2,111.00)
0002		P&P Bonds - CM/GC	(18.00)
0003		CM Fee	(38.00)
0004		GL and EL Insurance	(13.00)
Total:			(2,180.00)

Tecton Architects

Construction Solutions Group, LLC

By: _____

By: _____

Date: _____

Date: _____

Town Of Oxford

O&G Industries, Inc.

By: _____

By: _____

Date: _____

Date: _____



WOLVERINE FIRE PROTECTION CO.
 8067 NORTH DORT HIGHWAY
 P.O. BOX 219
 MOUNT MORRIS, MI 48458
 (810) 686-4630

FIRE SUPPRESSION
ALARMS & DETECTION & LIFE SAFETY
 DESIGN - INSTALLATION - REPAIR
 An Equal Opportunity Employer

November 10, 2020

Page 1 of 1

O&G Industries, Inc.
 112 Wall Street
 Torrington, CT 06790

Fax:
 E-Mail guskotait@ogind.com

RE:Oxford Middle School
 Oxford, CT
 P.O.# 2011400-4100
 YOUR JOB # 2011400
 OUR JOB # 2019-0324 99

Attn: Gus Kotait

Allowance 1 - Additional Sprinkler Req'd by FM
 PCO 2 forward flow for BFP
 PCO 3 flow test

FABRICATION	PCO 3	\$600.00
QUALITY CONTROL	PCO 2	\$2,289.00
		\$0.00
MISCELLANEOUS		-\$5,000.00
BOND		\$0.00
TOTAL		-\$2,111.00

SINCERELY,

Corey Richardson, Project Manager

Reviewed

by kotait11/12/2020 8:36:09
 PM



WOLVERINE FIRE PROTECTION CO.
8067 NORTH DORT HIGHWAY
P.O. BOX 219
MOUNT MORRIS, MI 48458
(810) 686-4630

FIRE SUPPRESSION
ALARMS & DETECTION & LIFE SAFETY
DESIGN - INSTALLATION - REPAIR
An Equal Opportunity Employer

April 16, 2020

Page 1 of 1

O&G Industries
112 Wall Street
Torrington, CT 06790

Fax:
E-Mail guskotait@ogind.com

RE: Oxford Middle School
Oxford, CT
P.O.# 2011400-4100
YOUR JOB # 2011400
OUR JOB # 2019-0324 3

Attn: Gus Kotait

PCO 3 FLOW TEST

This is the cost associated with additional flow test request per submittal review comments. See attachments
To be applied to Allowance as directed.

SUBCONTRACTORS AND EQUIPMENT

NEW ENGLAND WATER UTILITY

\$600.00

\$0.00

Handling Fee

0.00 %

\$0.00

Total Equipment & Subs: \$600.00

MISCELLANEOUS

\$0.00

BOND

\$0.00

TOTAL

\$600.00

SINCERELY,

Corey Richardson, Project Manager

Oxford Middle School Submittal Cover Sheet

<p>Contractor: Wolverine Fire Protection</p> <p>Spec Section: 211313</p> <p>Submittal Description:</p> <p>Wet-Pipe Sprinkler Systems_Shop Drawings</p> <p>Contractor Submittal #:</p> <p>Date:</p>	<p>Contractor Notes:</p>
<p style="text-align: center;">O&G INDUSTRIES, INC.</p> <p><input checked="" type="checkbox"/> Reviewed</p> <p><input type="checkbox"/> Reviewed as Noted</p> <p><input type="checkbox"/> Correct & Re-submit</p> <p>Date: 02/25/20 By: Robert Frank</p> <p>Review is for general arrangement only and does not release the supplier and/or the sub-contractor from responsibilities for quantities, dimensions, performance or other requirements of the contract documents.</p> <p>Submittal Pkg. 21 Spec Section #: 211313</p> <p>Submittal #: 01</p>	<p>O&G Industries Inc. Notes:</p> <p style="text-align: center; color: red; font-size: 1.2em;">Rev 1</p>
<p><u>CES Comments:</u></p> <p>1. Refer to drawings for comments.</p>	<div style="border: 1px solid red; padding: 5px;"> <p> <input type="checkbox"/> Reviewed/No Exceptions Taken <input checked="" type="checkbox"/> Furnish as Corrected <input type="checkbox"/> Rejected <input type="checkbox"/> Revise and Resubmit <input type="checkbox"/> Submit Specified Item </p> <p style="font-size: 0.8em; color: red;"> This review is only for general conformance with the design concept of the project and general compliance with the information given in the Contract Documents. Corrections or comments made on the shop drawings during this review do not relieve contractor from compliance with the requirements of the plans and specifications. Approval of a specific item shall not include approval of an assembly of which the item is a component. Contractor is responsible for: dimensions to be confirmed and correlated at the jobsite; information that pertains solely to the fabrication processes or to the means, methods, techniques, sequences and procedures of construction; coordination of his or her Work with that of all other trades; and for performing all work in a safe and satisfactory manner. </p> <p style="font-size: 0.8em; color: blue;"> CONSULTING ENGINEERING SERVICES, INC Date 2020-03-05 by KMC </p> </div>
	<p>Tecton Architect Notes:</p>
	<p>Consultant Notes (if Applicable):</p>

HYDRANT FLOW TEST

NAME		Valerie Hodder				WEATHER		TOWN		Oxford			
DATE		2/5/2020				START TIME		11:15am	END TIME		TEST NUMBER		107-0106
HYDRANT FLOWED						TEST HYDRANT			FLOW AT 20	DURATION	FLUSHING CONDITION OF WATER		
											BR, T, CS, C		
HYD #	Water Main Size	STREET	PITOT	GPM	NOZZLE TYPE DIA.	HYD #	STATIC	RESIDUAL PRESS.	20 PSI	MINUTES	BEFORE	AFTER	TOTAL GALS.
114	12	Greak Oak Road	26	856	Diffuser	113	67*	46	1323	4	C	C	2600
Test conducted by: V Hodder / R Siggars											Total Gallons		2600
Remarks: *Note - Some distribution turbulance was observed at the time of the test indicating a higher than normal static pressure result. If flow requirements for this project are close to test results, a new test may be necessary. Please note: All fire flow test reported data indicates distribution system conditions at the given time for the specific test. Previous or future results may differ due to tank level, pump activation, pressure adjustments on reducing valves, seasonal increases and other factors typical of a dynamic water distribution system.													

An additional flow test is recommended to verify static pressure at the project site. Results from updated test are recommended to be used for hydraulic calculations.



WOLVERINE FIRE PROTECTION CO.
8067 NORTH DORT HIGHWAY
P.O. BOX 219
MOUNT MORRIS, MI 48458
(810) 686-4630

FIRE SUPPRESSION
ALARMS & DETECTION & LIFE SAFETY
 DESIGN - INSTALLATION - REPAIR
 An Equal Opportunity Employer

March 25, 2020

Page 1 of 1

O&G Industries
112 Wall Street
Torrington, CT 06790

Fax:
E-Mail guskotait@ogind.com

RE: Oxford Middle School
Oxford, CT
P.O.# 2011400-4100
YOUR JOB # 2011400
OUR JOB # 2019-0324 2

Attn: Gus Kotait

PCO 1 FORWARD FLOW

This is the cost associated with the submittal comment to install a forward flow for the backflow preventor. This was not previously included or specified in the contract drawings. This will require additional engineering, fabrication, procurement, materials and labor.

ENGINEERING 4hrs/\$131ph **\$524.00**

FABRICATION 2hrs/\$89.82 **\$179.64**

MATERIAL

# Units	Description	UNIT PRICE	CHARGE
1	4" VICTAULIC GRVD. BFV W/T.S. NC	294.26	294.26
1	4" GROOVED TEE	29.63	29.63
2	4" GROOVED ELL	20.94	41.88
8	4" GROOVED RIGID COUPLING	18.66	149.28
21	4" SCH-10 A-135 PIPE BLK	10.68	224.28
1	4" X 6" GRVD WELD LET	25.49	25.49

Sub Total Material: 764.82

Profit on Material 10.00 % 76.48

Total Material : 841.30

LABOR

Fitter	Straight Time	4.00	@	\$89.82	\$359.28
Foreman	Straight Time	4.00	@	\$96.35	\$385.40

Total Labor: \$744.68

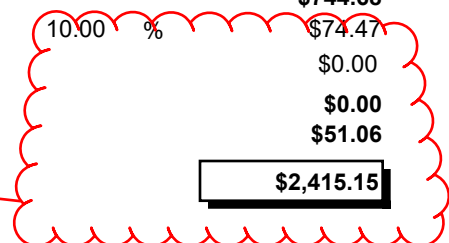
Profit on Labor 10.00 % \$74.47

MISCELLANEOUS

BOND \$0.00

TOTAL **\$2,415.15**

Deduct OH&P &
 Bond: \$2,289 charge
 against allowance.

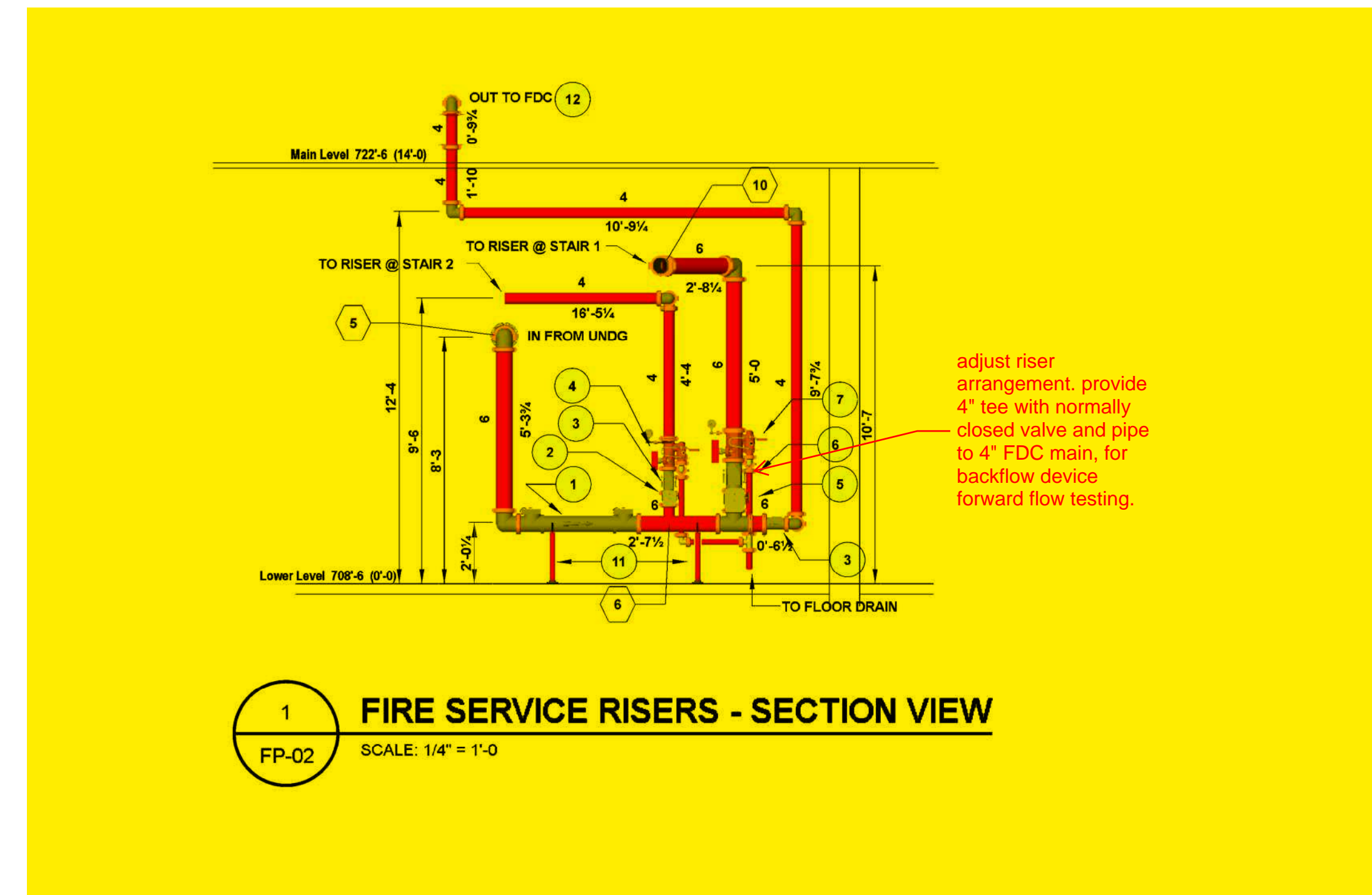


SINCERELY,

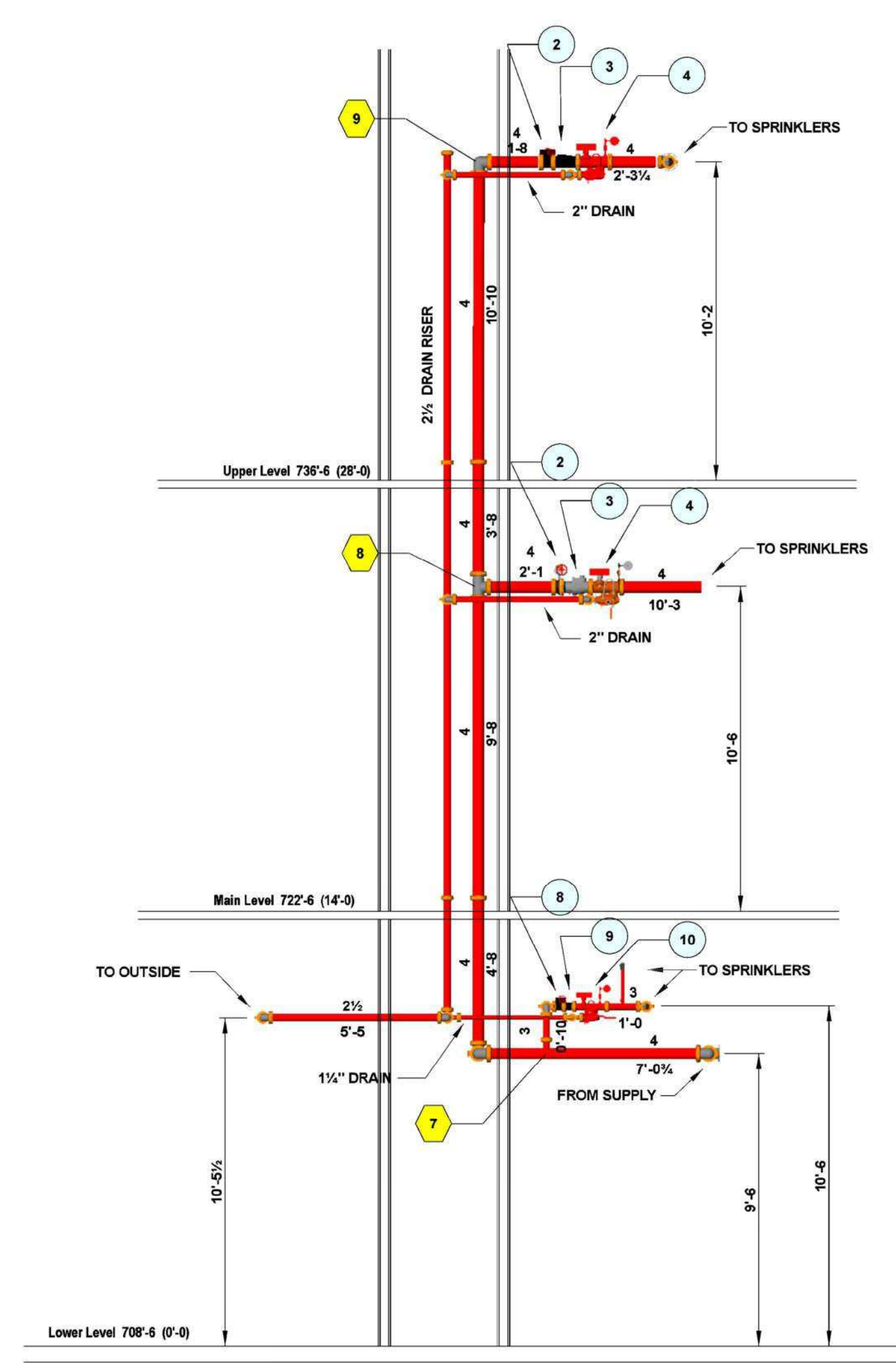
Corey Richardson, Project Manager

Oxford Middle School Submittal Cover Sheet

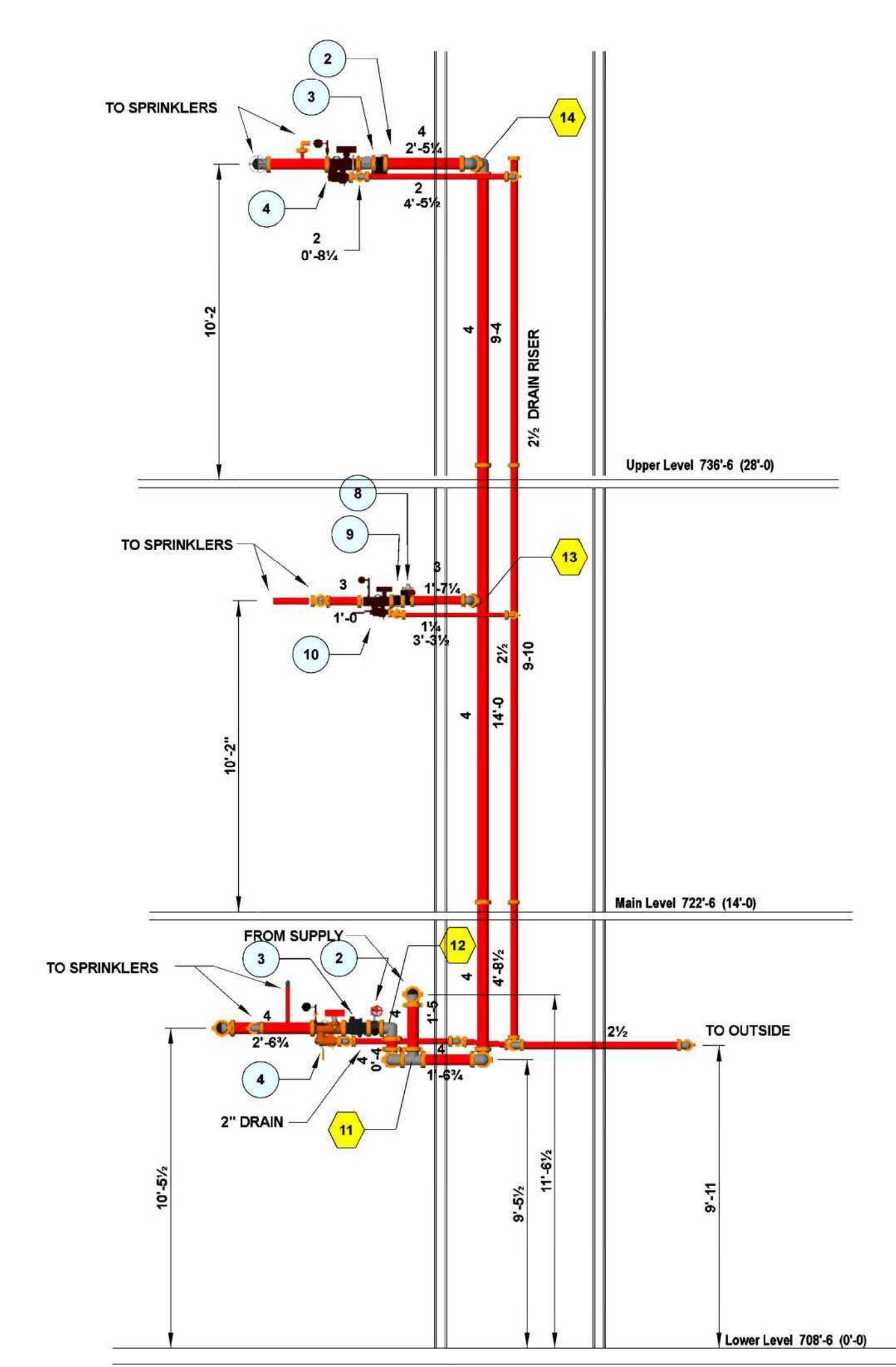
<p>Contractor: Wolverine Fire Protection</p> <p>Spec Section: 211313</p> <p>Submittal Description:</p> <p>Wet-Pipe Sprinkler Systems_Shop Drawings</p> <p>Contractor Submittal #:</p> <p>Date:</p>	<p>Contractor Notes:</p>
<p style="text-align: center;">O&G INDUSTRIES, INC.</p> <p><input checked="" type="checkbox"/> Reviewed</p> <p><input type="checkbox"/> Reviewed as Noted</p> <p><input type="checkbox"/> Correct & Re-submit</p> <p>Date: 02/25/20 By: Robert Frank</p> <p>Review is for general arrangement only and does not release the supplier and/or the sub-contractor from responsibilities for quantities, dimensions, performance or other requirements of the contract documents.</p> <p>Submittal Pkg. 21 Spec Section #: 211313</p> <p>Submittal #: 01</p>	<p>O&G Industries Inc. Notes:</p> <p style="text-align: center; color: red; font-size: 1.2em;">Rev 1</p>
<p><u>CES Comments:</u></p> <p>1. Refer to drawings for comments.</p>	<div style="border: 1px solid red; padding: 5px;"> <p> <input type="checkbox"/> Reviewed/No Exceptions Taken <input type="checkbox"/> Rejected <input checked="" type="checkbox"/> Furnish as Corrected <input type="checkbox"/> Submit Specified Item <input type="checkbox"/> Revise and Resubmit </p> <p style="font-size: 0.8em; color: red;"> This review is only for general conformance with the design concept of the project and general compliance with the information given in the Contract Documents. Corrections or comments made on the shop drawings during this review do not relieve contractor from compliance with the requirements of the plans and specifications. Approval of a specific item shall not include approval of an assembly of which the item is a component. Contractor is responsible for: dimensions to be confirmed and correlated at the jobsite; information that pertains solely to the fabrication processes or to the means, methods, techniques, sequences and procedures of construction; coordination of his or her Work with that of all other trades; and for performing all work in a safe and satisfactory manner. </p> <p style="font-size: 0.8em; color: blue;"> CONSULTING ENGINEERING SERVICES, INC Date 2020-03-05 by KMC </p> </div>
	<p>Tecton Architect Notes:</p>
	<p>Consultant Notes (if Applicable):</p>



1 FIRE SERVICE RISERS - SECTION VIEW
SCALE: 1/4" = 1'-0"



2 RISER @ STAIR 2 - SECTION VIEW
SCALE: 1/4" = 1'-0"



3 RISER @ STAIR 1 - SECTION VIEW
SCALE: 1/4" = 1'-0"

SPRINKLER SYSTEM PARTS LEGEND		
Key Note	Size	Description
1	6"	AMES 4000 SS REDUCED PRESSURE DETECTOR ASSEMBLY
2	4"	VICTAULIC 705 GROOVED BUTTERFLY VALVE w/ TAMPER SWITCH
3	4"	VICTAULIC 717 GROOVED CHECK VALVE
4	4"	VICTAULIC 747M RISER MANIFOLD
5	6"	VICTAULIC 705 GROOVED BUTTERFLY VALVE w/TAMPER SWITCH
6	6"	VICTAULIC 717 GROOVED CHECK VALVE
7	6"	VICTAULIC 747M RISER MANIFOLD
8	3"	VICTAULIC 705 GROOVED BUTTERFLY VALVE w/TAMPER SWITCH
9	3"	VICTAULIC 717 GROOVED CHECK VALVE
10	3"	VICTAULIC 747M RISER MANIFOLD
11	2"	PIPE STAND
12	4 x 2 1/2 x 2 1/2	SINGLE CLAPPER POLISHED BRASS FIRE DEPARTMENT CONNECTION

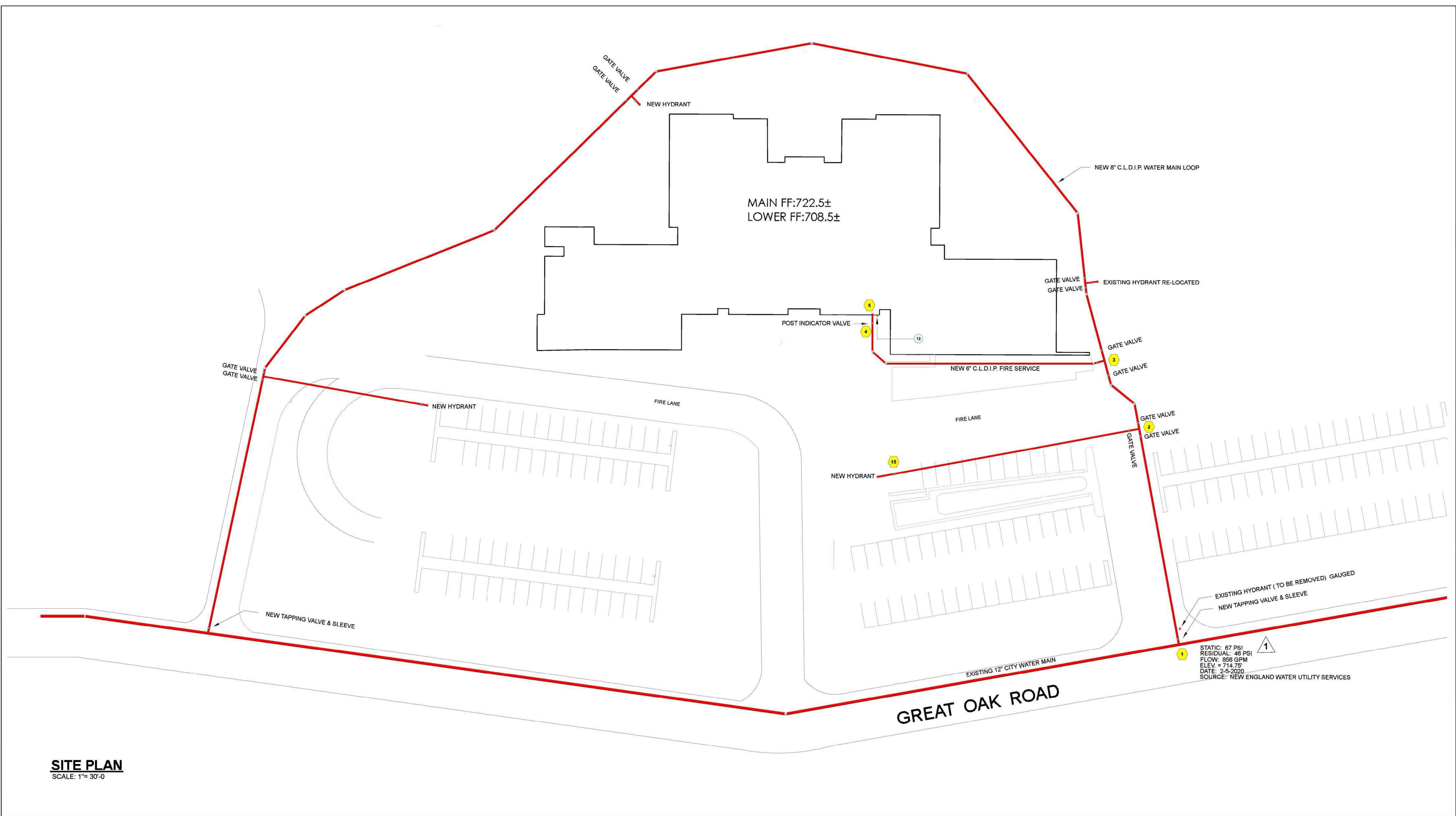
FIRE PROTECTION - DESIGN NOTES & LEGEND	
SCOPE OF WORK: AUTOMATIC FIRE SPRINKLER SYSTEMS TO PROTECT THE ENTIRE NEW BUILDING WET PIPE SPRINKLER SYSTEMS TO PROTECT ALL AREAS EXCEPT THOSE NOTED BELOW DRY PIPE SPRINKLER SYSTEMS TO PROTECT THE EXTERIOR COVERED COURTYARD STAIRWAY AREAS	
SPRINKLER SYSTEM DESIGN:	LIGHT HAZARD: 0.15 GPM/SQ. FT.
OCCUPANCY CLASSIFICATION:	1500 SQ. FT.
DESIGN DENSITY:	225 SQ. FT.
DESIGN AREA:	0 GPM
MAX. PROTECTION AREA PER SPRINKLER:	100 GPM
INSIDE HOSE ALLOWANCE:	OFFICES, CORRIDORS, CAFETERIA, CONFERENCE ROOMS, ATRIUM, RESTROOMS, AND CLASSROOMS (EXCEPT SCIENCE AND ENGINEERING ROOMS)
OUTSIDE HOSE ALLOWANCE:	250 GPM
AREAS INCLUDED:	MECHANICAL ROOMS, KITCHENS/SEVERY, STORAGE ROOMS, AND SCIENCE ROOMS
OCCUPANCY CLASSIFICATION:	ORDINARY HAZARD GROUP 1
DESIGN DENSITY:	0.15 GPM/SQ. FT.
DESIGN AREA:	1500 SQ. FT.
MAX. PROTECTION AREA PER SPRINKLER:	150 SQ. FT.
INSIDE HOSE ALLOWANCE:	0 GPM
OUTSIDE HOSE ALLOWANCE:	250 GPM
AREAS INCLUDED:	STAGE, AND ENGINEERING ROOMS
OCCUPANCY CLASSIFICATION:	ORDINARY HAZARD GROUP 2
DESIGN DENSITY:	0.20 GPM/SQ. FT.
DESIGN AREA:	1500 SQ. FT.
MAX. PROTECTION AREA PER SPRINKLER:	150 SQ. FT.
INSIDE HOSE ALLOWANCE:	0 GPM
OUTSIDE HOSE ALLOWANCE:	250 GPM
AREAS INCLUDED:	STAGE, AND ENGINEERING ROOMS

- NOTES:**
- SYSTEMS SHALL BE DESIGNED, INSTALLED, AND TESTED IN ACCORDANCE WITH NFPA # 13 (2016), 14 (2016), 20 (2016) AND 24 (2016)
 - SPRINKLER SYSTEM DESIGN AREAS MAY BE REDUCED ACCORDING TO NFPA #13 SECTION 11.2.3.2.3
 - ALL PIPE, MATERIALS, AND DEVICES ARE U.L. LISTED AND/OR FM APPROVED
 - ALL BLACK AND GALVANIZED THREADED FITTINGS ARE CLASS 125 CAST IRON
 - ALL BLACK AND GALVANIZED FLANGED FITTINGS ARE CLASS 125 CAST IRON
 - ALL BLACK AND GALVANIZED GROOVED FITTINGS ARE CLASS 125 DUCTILE IRON - SHORT PATTERN
 - ALL GROOVED CONNECTIONS ARE A.U.L. LISTED COMBINATION OF FITTINGS, GASKETS, AND GROOVES
 - ALL CONNECTIONS TO CROSSBARS ARE BY WELDS (U.N.C.)
 - ALL PIPE DIMENSIONS ARE CUT LENGTHS (U.N.C.)
 - ALL DRIPS AND ARMEDERS TO SPRINKLERS TO BE 1" PIPE, ADJUSTABLE IF DROP PIPE, OR FLEXIBLE IF SPRINKLER ASSEMBLY
 - SYSTEM ALARMS AND SUPERVISORY DEVICES SHOWN ARE PROVIDED AND INSTALLED BY VFPF. WIRING, CONDUIT AND TERMINATION CONNECTION IS BY OTHERS (U.N.C.)

WET PIPE SYSTEMS			DRAIN LINES		
PIPE SIZE	PIPE SCH.	PIPE TYPE	PIPE SIZE	PIPE SCH.	PIPE TYPE
1 1/2"	40	BLACK	1 1/2"	40	GALV.
1 1/4"	40	BLACK	2"	10	GALV.
1 1/2"	40	BLACK			
2"	40	BLACK			
2 1/2"	10	BLACK			
3"	10	BLACK			
4"	10	BLACK			
6"	10	BLACK			

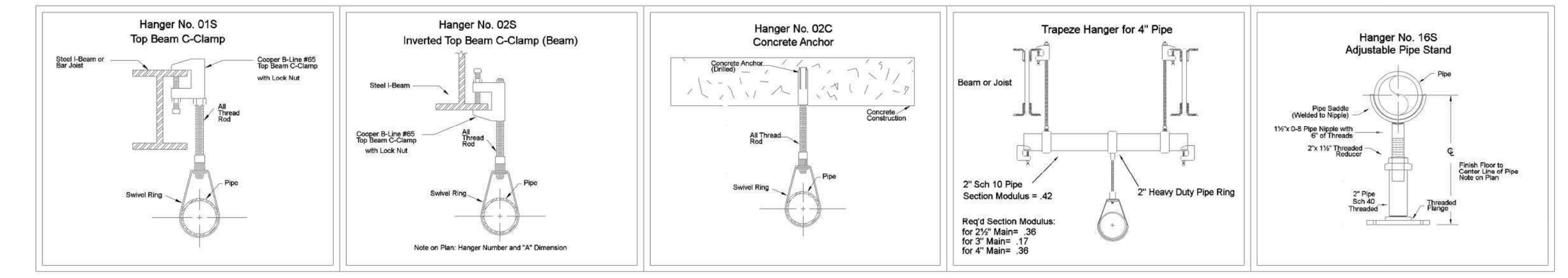
ABBREVIATIONS:			
ASD	AUTOMATIC BALL DRIP	N/A	NOT APPLICABLE
A.F.F.	ABOVE FINISHED FLOOR	NAS	NO AUTOMATIC SPRINKLERS
AHJ	AUTHORITY HAVING JURISDICTION	NC	NORMALLY CLOSED
BFP	BACKFLOW PREVENTER	NC	NOT IN CONTRACT
BFV	BUTTERFLY VALVE	NO	NORMALLY OPEN
BLDG	BUILDING	NTS	NOT TO SCALE
CONT	CONTINUED	OSBY	OUTSIDE STEM & YOKER VALVE
DN	DOWN	PV	POST INDICATOR VALVE
DP	DROP	P.S.	PRESSURE SWITCH
DPV	DRY PIPE VALVE	PSI	POUNDS PER SQUARE INCH
DWG	DRAWING	RN	RISER PIPE
EL.	ELEVATION	SM	SMALLER
FOVA	FLOOR CONTROL VALVE ASSEMBLY	SP	SPRING
FDC	FIRE DEPARTMENT CONNECTION	SQ. FT.	SQUARE FEET
FF.	FINISHED FLOOR	SS	STAINLESS STEEL
FHV	FIRE HOSE VALVE	T.O.S.	TOP OF STEEL
FHVC	FIRE HOSE VALVE CABINET	T.S.	TAMPER SWITCH
F.S.	FLOW SWITCH	TYE	TYPICAL
GALV	GALVANIZED	U.N.C.	UNLESS NOTED OTHERWISE
GPM	GALLONS PER MINUTE	W	WITH

SYMBOLS:	
—	CENTER LINE OF PIPE ABOVE FINISH FLOOR
—	CENTER LINE OF PIPE BELOW TOP OF STEEL OR BELOW DECK
A	REVISION NUMBER
Ⓝ	REFERENCE NOTE - SEE EQUIPMENT LEGEND
Ⓜ	HYDRAULIC REFERENCE POINT
W00	THREADED LINE # FOR FABRICATION
W01	WELDED LINE # FOR FABRICATION
W02	MAIN PIPE LABEL FOR FABRICATION
W03	ROOM TAG: ROOM NAME, ROOM #, CEILING HEIGHT
W04	FINISH CEILING HEIGHT ABOVE FINISH FLOOR
W05	FLEXIBLE SPRINKLER DROP LENGTH
W06	SLEEVE (SEE SLEEVE SCHEDULE)
W07	EXISTING PIPE TO REMAIN
W08	EXISTING PIPE TO BE REMOVED
W09	EXISTING OUTLET TO SUPPLY NEW SPRINKLER



SITE PLAN
SCALE: 1" = 30'-0"

DRAWING		DESCRIPTION	
FP-01	FIRE PROTECTION NOTES, SITE PLAN & HANGER DETAILS		
FP-02	LOWER LEVEL FIRE PROTECTION PLAN		
FP-03	MAIN LEVEL FIRE PROTECTION PLAN		
FP-04	UPPER LEVEL FIRE PROTECTION PLAN		



HANGER DETAILS



REVISIONS		
REV.	DATE	DESCRIPTION
1	2/11/2020	JT New flow test

WOLVERINE FIRE PROTECTION CO.
101 Bidwell Road
South Windsor, CT 06074
TEL: 860-282-2488

OXFORD MIDDLE SCHOOL
50 GREAT OAK ROAD
OXFORD, CT 06478

FIRE PROTECTION NOTES, LEGEND
SITE PLAN & DETAILS

Sheet: 000
Date: 10/24/2019
Scale: 1" = 30'-0"

FP-01