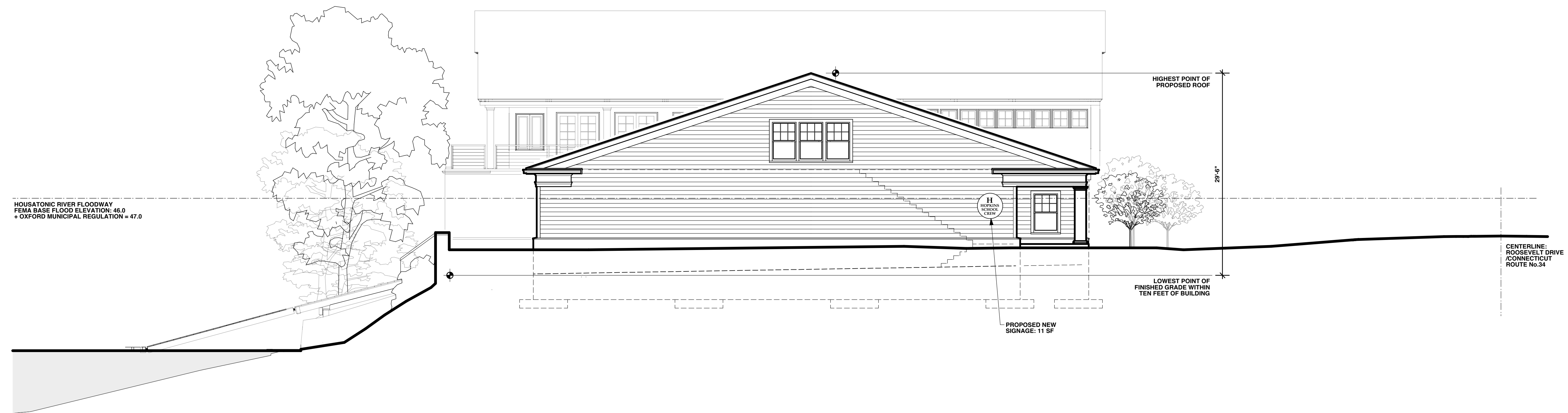


COMPOSITE NORTHEAST ELEVATION: (ROOSEVELT DRIVE FACADES)
SCALE: 1/8" = 1'-0"



COMPOSITE SOUTHEAST ELEVATION (PROPOSED BUILDING IN FOREGROUND)
SCALE: 1/8" = 1'-0"


NEW HAVEN ROWING CLUB, INC.
 403-407 ROOSEVELT DRIVE
 OXFORD, CONNECTICUT 06483
 TELEPHONE: (203) 734-0125

Architect:
Stuart Lathers Associates LLC
 Architecture
 319 Peck Street
 New Haven, Connecticut 06513
 Telephone: 203 787 5644
 Web: www.stuartlathers.com

Drawing Title:
 COMPOSITE ELEVATIONS

Scale: AS NOTED
Drawn By: SL / VD
Date: 10 - 30 - 2019
Revisions: