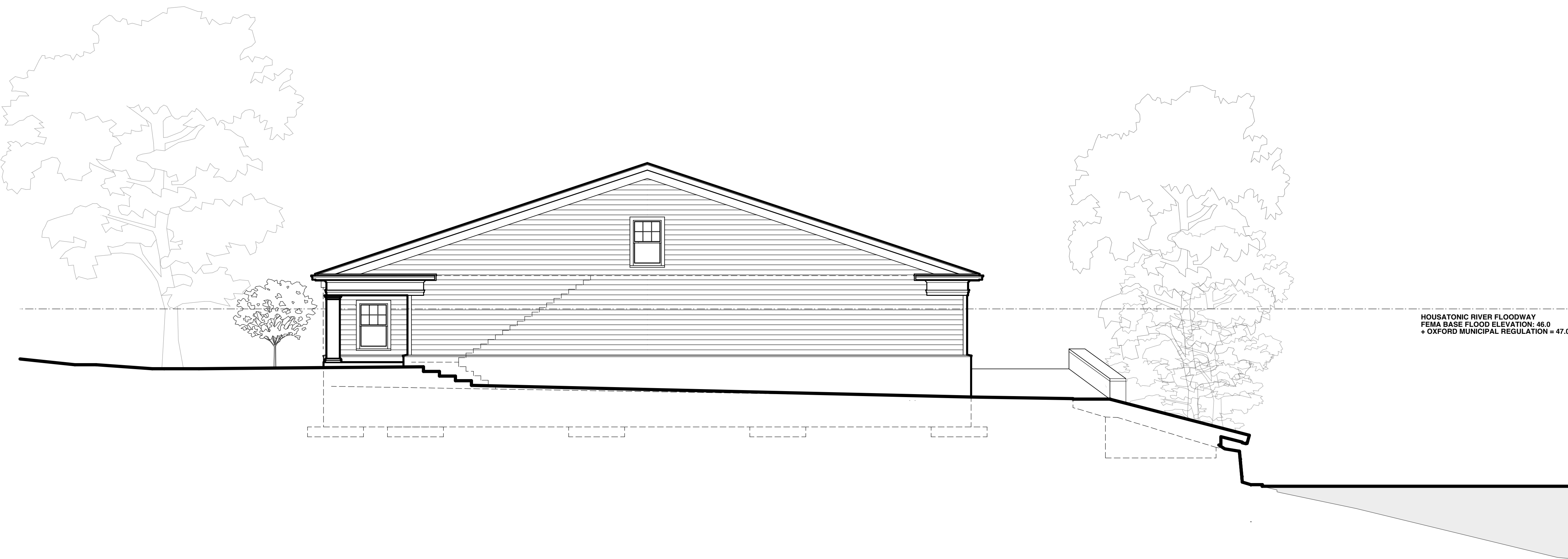


COMPOSITE SOUTHWEST ELEVATION: (HOUSATONIC RIVER FACADES)  
SCALE: 1/8" = 1'-0"



COMPOSITE NORTHWEST ELEVATION  
SCALE: 1/8" = 1'-0"



NEW HAVEN ROWING CLUB, INC.  
403-407 ROOSEVELT DRIVE  
OXFORD, CONNECTICUT 06483  
TELEPHONE: (203) 734-0125

Architect:  
**Stuart Lathers Associates LLC**  
Architecture  
319 Peck Street  
New Haven, Connecticut 06513  
Telephone: 203 787 5644  
Web: [www.stuartlathers.com](http://www.stuartlathers.com)

Drawing Title:  
COMPOSITE  
ELEVATIONS

Scale: AS NOTED  
Drawn By: SL / VD  
Date: 10 - 30 - 2019  
Revisions: